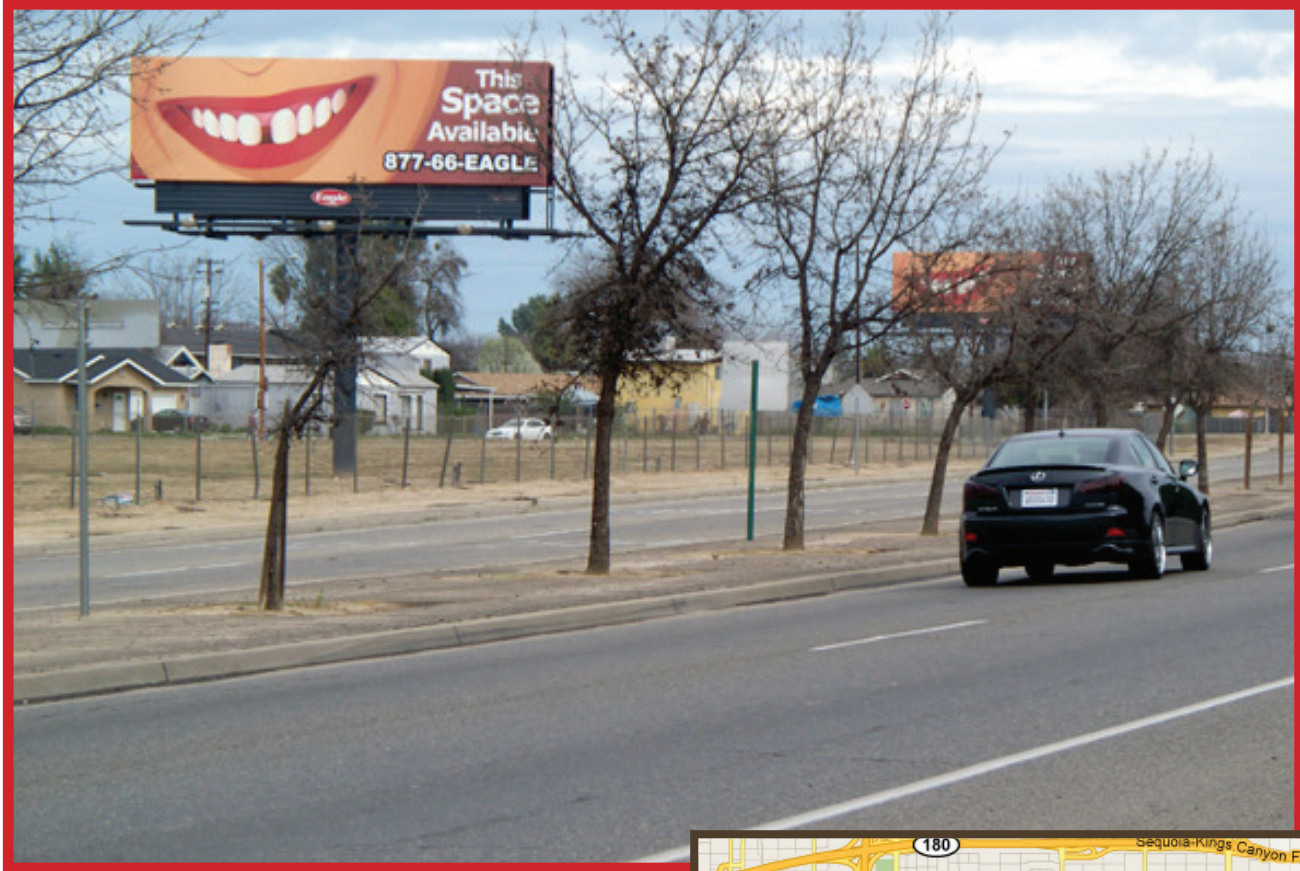




Permanent Outdoor Bulletin Fresno, California



Panel #JAC1W:

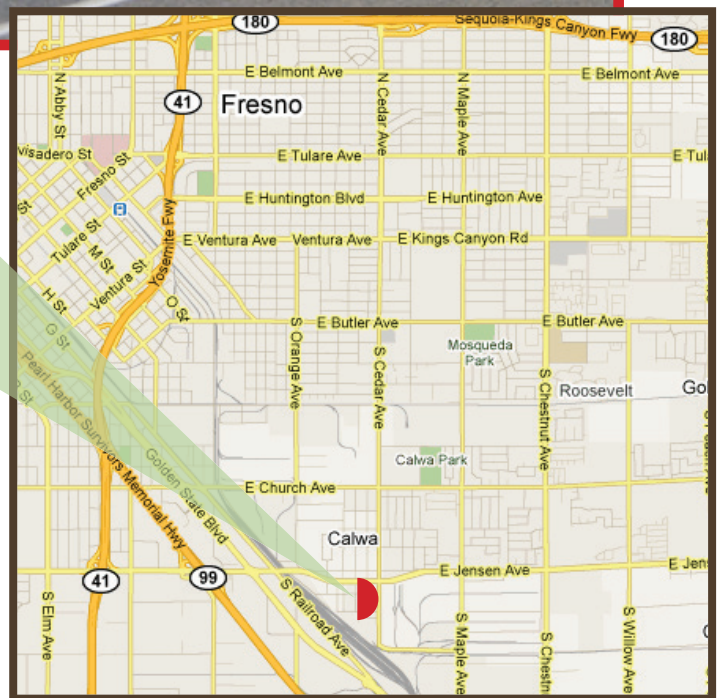
Jensen Avenue Bypass NL e/o Cedar,
West/Face, 10'6" x 36'

EOIs/Week: 63,520
Illuminated Dusk to Midnight

Longitude: -119.75229 **Latitude:** 36.70647

Address: 4360 E. Jensen Avenue Bypass

Trade Area: Located on the busy commuter route of Jensen Avenue Bypass, this display reaches all traffic coming from Hwy 99, heading to the rapidly growing communities of South Fresno, Clovis, Sunnyside, Reedley and Sanger.



Eagle Display Services, LLC.

419 Main Street, Suite #16 • Huntington Beach, CA 92648
877-66-EAGLE(663-2453) • www.eagledisplays.com

